



GMT MONTHLY MEMBERSHIP PROGRESS REPORT

Results as of: 5/31/2020

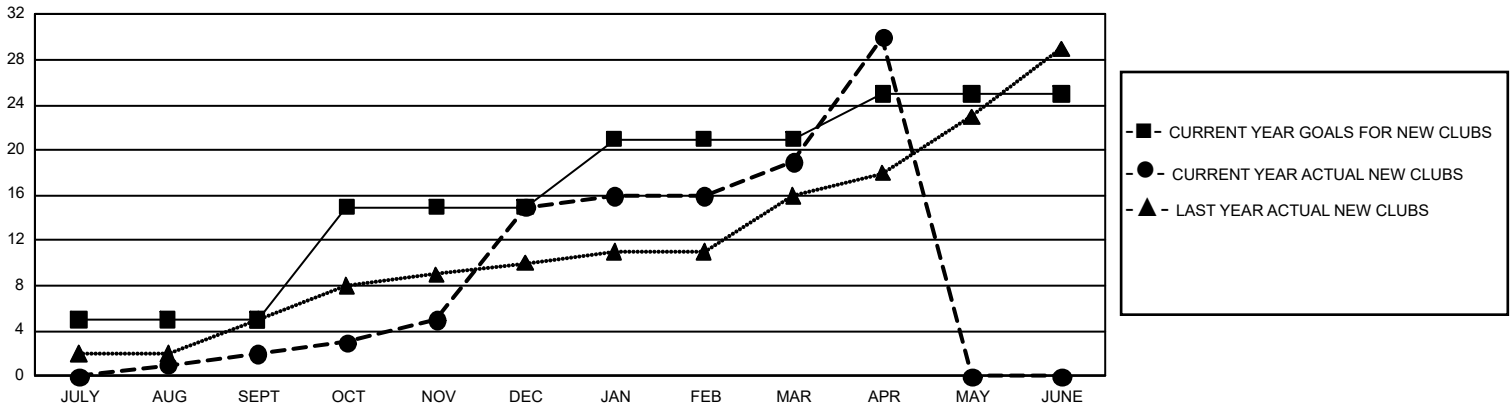
GMT Constitutional Area 3, Group A

GMT: OPEN

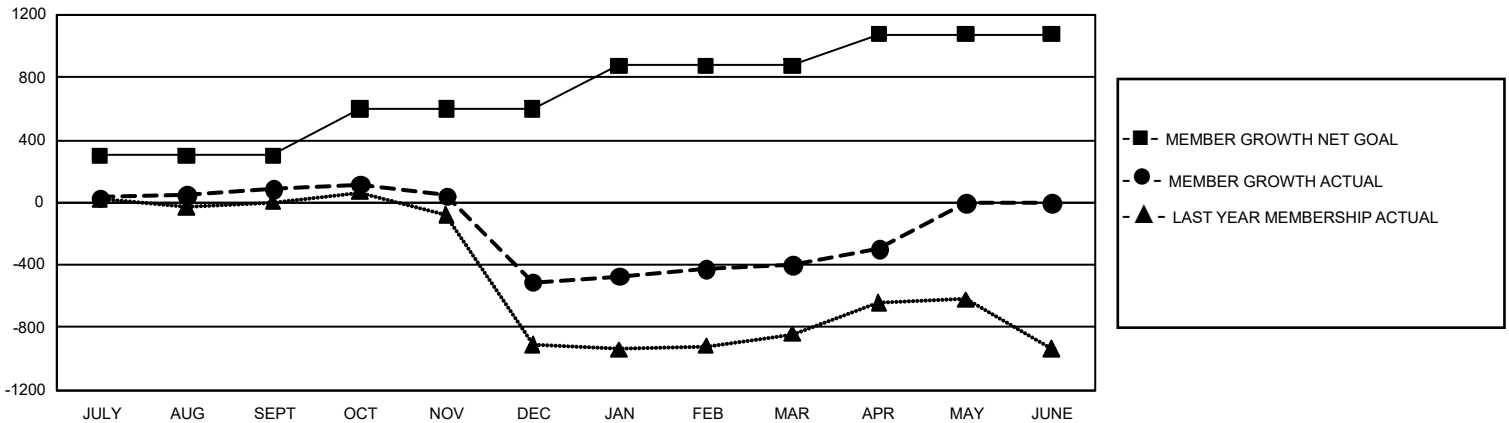
REPORT DOES NOT INCLUDE CLUBS IN UNDISTRICTED AREAS.

Clubs				Members			
RESULTS FOR 2019-2020				RESULTS FOR 2019-2020			
QUARTER	NEW CLUB GOAL	NEW CLUBS	DROPPED CLUBS	QUARTER	MEMBER GROWTH NET GOAL	MEMBER GROWTH ACTUAL	DROPPED MEMBERS ACTUAL (including transfers)
JULY/AUG/SEPT	15	2	2	JULY/AUG/SEPT	903	505	338
OCT/NOV/DEC	30	13	16	OCT/NOV/DEC	894	507	1,047
JAN/FEB/MAR	18	4	5	JAN/FEB/MAR	834	442	287
APR/MAY/JUNE	12	11	0	APR/MAY/JUNE	600	160	53

GOALS AND ACTUAL NEW CLUBS CUMULATIVE



GOALS AND ACTUAL MEMBERS CUMULATIVE



DROPPED CLUBS: 23	288 CLUBS OF 537 ADDED 1 OR MORE NEW MEMBERS	GENDER DISTRIBUTION
DROPPED MEMBERS		MALE 6,201 (53.99%)
DECEASED 67		FEMALE 5,284 (46.01%)
CLUB CANCELLED 430	CLICK HERE FOR CUMULATIVE MEMBERSHIP DATA	TOTAL FAMILY UNIT MEMBERS 3,963
OTHER 1,225		FAMILY MEMBERS PAYING HALF DUES 2,347
TOTAL 1,722		